

**Bath cascade spout for wall mounting - Chrome**

MEM

13 430 740



- 200mm projection
- cascade
- plate 180 mm x 60 mm
- hole diameter 40 mm
- 1/2" connection
- plug-link mounting
- max. flow 26.5 l/min at 3 bar flow pressure
- WRAS 1809017

|   |                                     |               |
|---|-------------------------------------|---------------|
|  | Chrome                              | 13 430 740-00 |
|  | Brushed Platinum                    | 13 430 740-06 |
|  | Platinum                            | 13 430 740-08 |
|  | Dark Chrome                         | 13 430 740-19 |
|  | Brushed Durabronze<br>(23kt Gold)   | 13 430 740-28 |
|  | Matte Black                         | 13 430 740-33 |
|  | Brushed<br>Champagne (22kt<br>Gold) | 13 430 740-46 |
|  | Champagne (22kt<br>Gold)            | 13 430 740-47 |
|  | Brushed Dark<br>Platinum            | 13 430 740-99 |

**Recommended miscellaneous**



- Concealed wall elbow -** 35 085 970 90
- max. recess depth 163 mm
  - min. recess depth 90 mm

13 430 740

mm [inches]



Flow rate chart



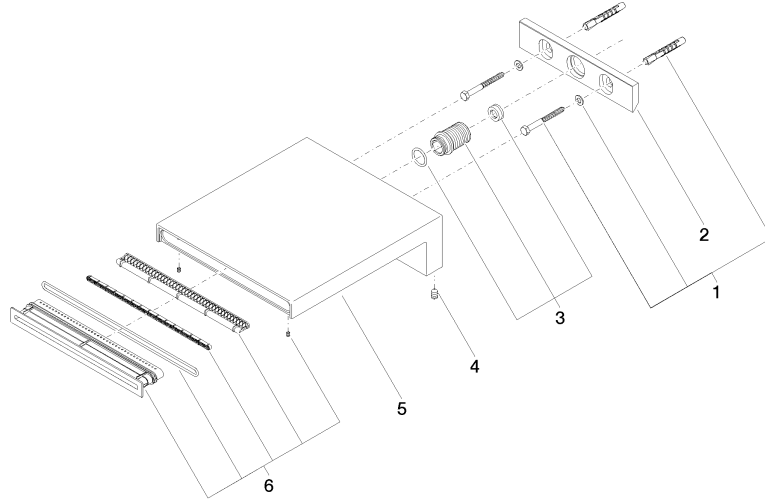
Trajectory diagram



Certificates

IAPMO\_4976 (6).    LGA\_19258.    WRAS\_1809017.

13 430 740



### Spare parts list

| No. | Item Number        | Name       | Quantity used | Delivery time |
|-----|--------------------|------------|---------------|---------------|
| 1   | 04 30 31 014 00 90 | fixing set | 1             | 2             |
| 2   | 09 17 97 056 90    | holder     | 1             | 2             |
| 3   | 90 24 05 008 00 90 | nipple set | 1             | 2             |
| 4   | 09 31 11 144 90    | pin        | 2             | 2             |
| 5   | 09 11 74 042-00    | spout      | 1             | 60            |
| 6   | 90 29 03 059 00 90 | insert     | 1             | 2             |